



MONTHLY MEMBERSHIP PROGRESS REPORT

District 2 S5

Results as of: 3/31/2016

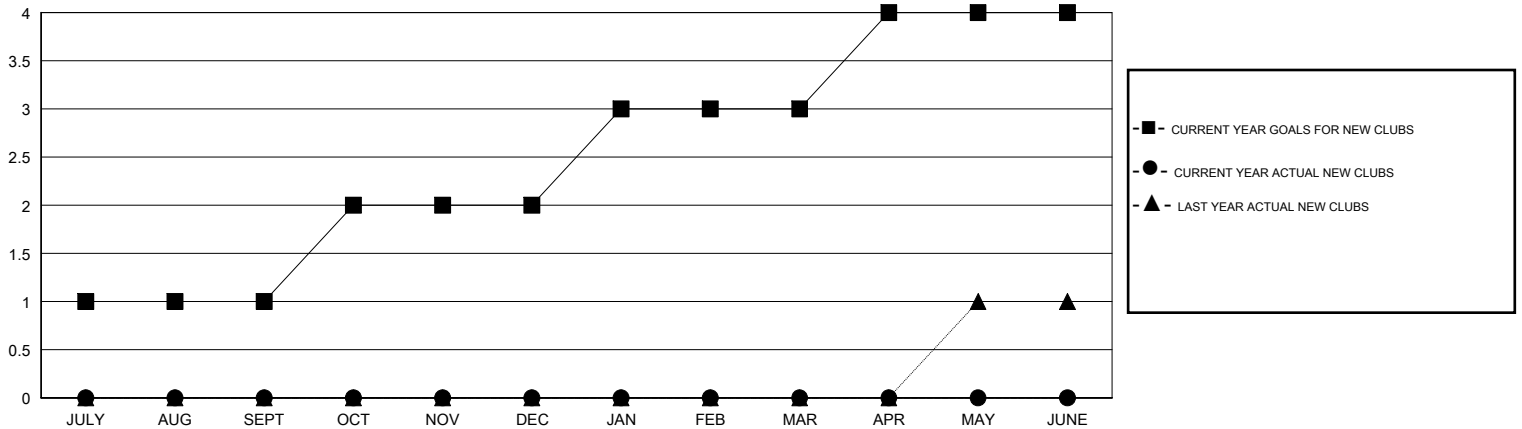
GMT: HAL GRIFFIN

LOCATION TEXAS

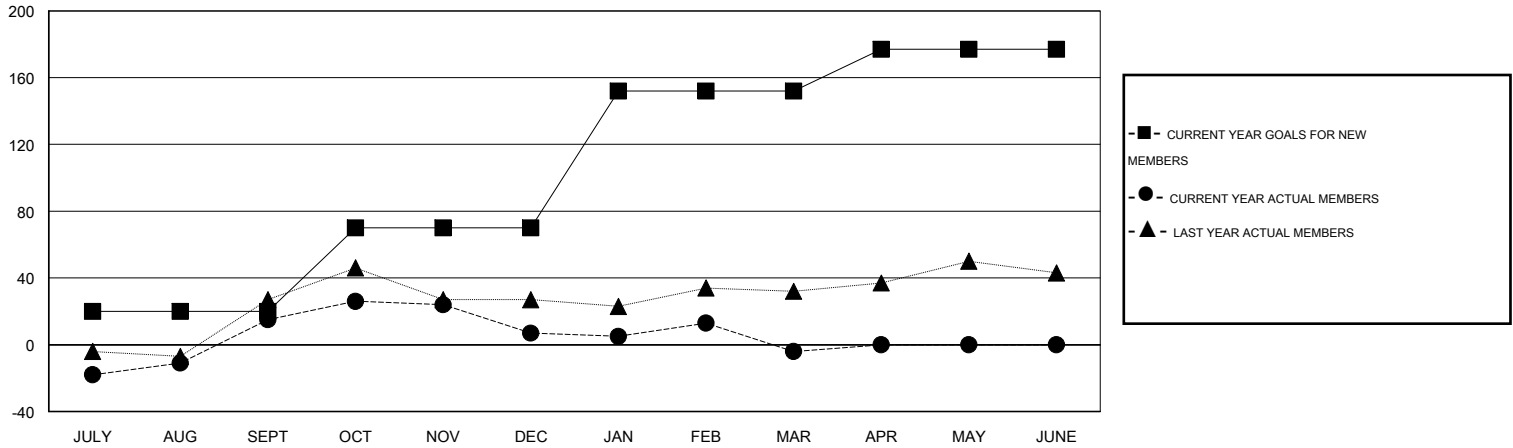
GMT CA 1

Clubs					Members				
RESULTS FOR 2015-2016					RESULTS FOR 2015-2016				
QUARTER	NEW CLUB GOAL	NEW CLUBS	DROPPED CLUBS	NET GAIN/LOSS	QUARTER	NEW MEMBER GOAL	CHARTER AND NEW MEMBERS ADDED	DROPPED MEMBERS	NET GAIN/LOSS
JULY/AUG/SEPT	1	0	0	0	JULY/AUG/SEPT	20	95	80	15
OCT/NOV/DEC	1	0	0	0	OCT/NOV/DEC	50	51	59	-8
JAN/FEB/MAR	1	0	1	-1	JAN/FEB/MAR	82	84	95	-11
APR/MAY/JUNE	1	0	0	0	APR/MAY/JUNE	25	0	0	0

GOALS AND ACTUAL NEW CLUBS CUMULATIVE



GOALS AND ACTUAL MEMBERS CUMULATIVE



DROPPED CLUBS: 1	45 CLUBS OF 60 ADDED 1 OR MORE NEW MEMBERS	<u>GENDER DISTRIBUTION</u>			
<u>DROPPED MEMBERS</u>		MALE	1,482 (66.37%)		
DECEASED	16	FEMALE	751 (33.63%)		
CLUB CANCELLED	21	CLICK HERE FOR HEALTH ASSESSMENT DATA			
OTHER	197			FAMILY UNIT MEMBERS	316
TOTAL	234			HEAD OF HOUSEHOLD	156
		NON-HEAD OF HOUSEHOLD	160		